

# 期數的鳥瞰照片

## AERIAL PHOTOGRAPH OF THE PHASE



This blank area falls  
outside the coverage  
of the relevant  
Aerial Photograph  
鳥瞰照片並不覆  
蓋本空白範圍

 期數所在位置  
Location of the Phase

### 資料來源：

摘錄自地政總署測繪處於2019年12月4日在6,900呎飛行高度拍攝之鳥瞰照片，編號為E083653C。

### Source of information:

Adopted from part of the aerial photo taken by the Survey and Mapping Office of the Lands Department at a flying height of 6,900 feet, photo No. E083653C, dated 4th December 2019.

香港特別行政區政府地政總署測繪處©版權所有，未經許可，不得複製。  
Survey and Mapping Office, Lands Department, The Government of HKSAR  
© Copyright reserved - reproduction by permission only.

### 備註:

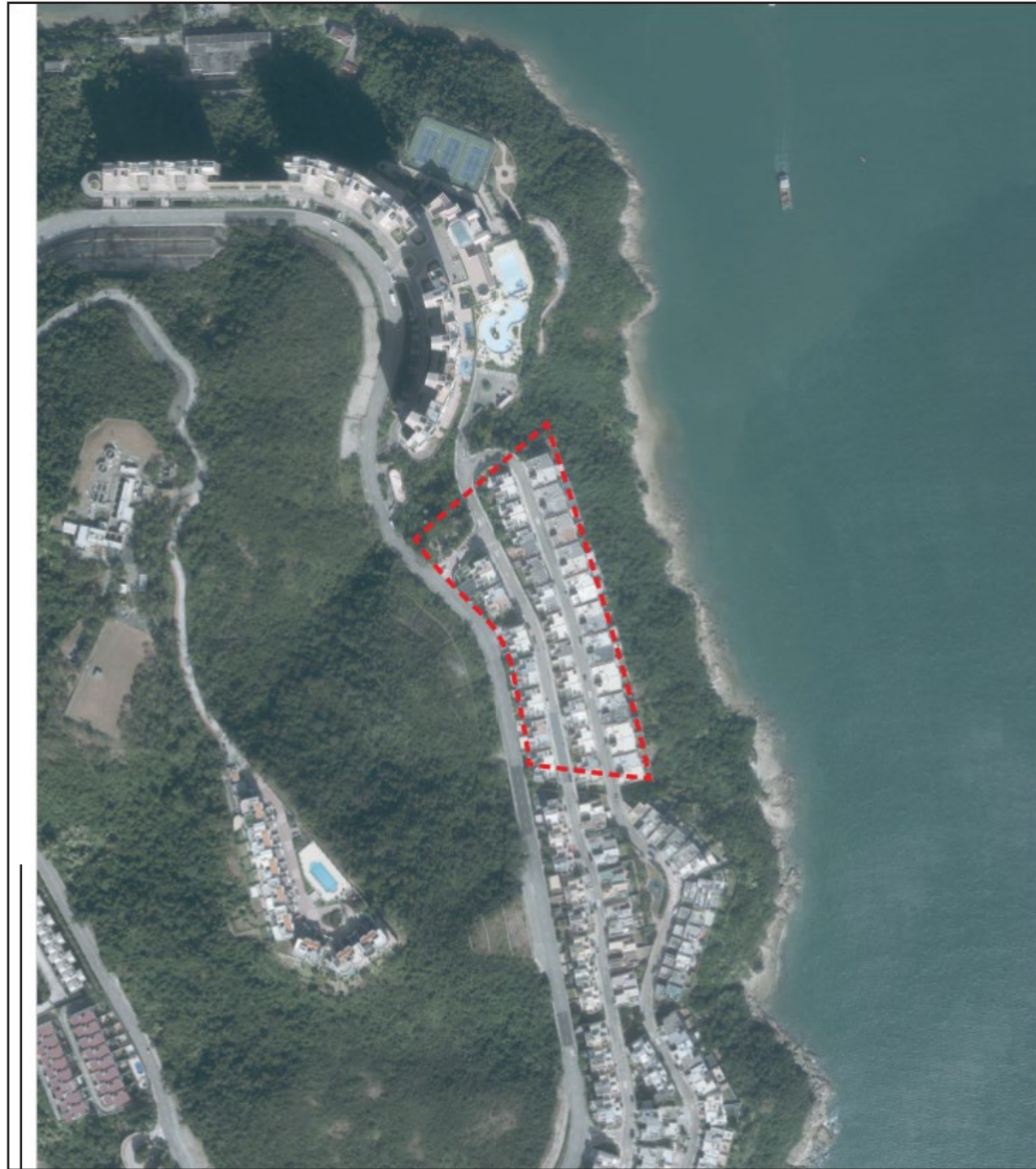
因技術原因(例如期數之不規則形狀)，鳥瞰照片所顯示之範圍多於《一手住宅物業銷售條例》所要求。

### Remark:

Due to technical reasons (such as the irregular shape of the Phase), the aerial photograph shows more than the area required under the Residential Properties (First-hand Sales) Ordinance.

# 期數的鳥瞰照片

## AERIAL PHOTOGRAPH OF THE PHASE



 期數所在位置  
Location of the Phase

**資料來源：**

摘錄自地政總署測繪處於2019年12月4日在6,900呎飛行高度拍攝之鳥瞰照片，編號為E083654C。

**Source of information:**

Adopted from part of the aerial photo taken by the Survey and Mapping Office of the Lands Department at a flying height of 6,900 feet, photo No. E083654C, dated 4th December 2019.

香港特別行政區政府地政總署測繪處©版權所有，未經許可，不得複製。  
Survey and Mapping Office, Lands Department, The Government of HKSAR  
© Copyright reserved - reproduction by permission only.

This blank area falls outside the coverage of the relevant Aerial Photograph  
鳥瞰照片並未覆蓋本空白範圍

**備註:**

因技術原因(例如期數之不規則形狀)，鳥瞰照片所顯示之範圍多於《一手住宅物業銷售條例》所要求。

**Remark:**

Due to technical reasons (such as the irregular shape of the Phase), the aerial photograph shows more than the area required under the Residential Properties (First-hand Sales) Ordinance.